

Secured Medical Direction UK CO., LTD

# About Us

Secured Medical Direction UK Co., Ltd. is a company committed to serve healthcare professionals, hospitals and patients around the world. We are guided by the scientific outlook on development and corporate culture of placing people at the core of our value and advance in a progressive manner to bring more benefits to the society in the medical and healthcare sector.

Secured Medical Direction UK Co., Ltd. delivers the highest quality service and products with professionalism, knowledge and personal attention.

SMD provides an extensive range of medical devices and healthcare products such as: airway management, feeding and drainage tubes, syringes and needles, IV therapy and vascular access products, wound care products, products for urology, non-woven products, dental products, gloves, miscellaneous, shoe cover dispenser products, sanitary absorbent products.

We are always upgrading the product design and quality using advanced manufacturing technologies to satisfy our client's demands.

Accuracy, professionalism, efficiency are exactly what you can expect from us. As evidence of our efforts, our facilities have obtained ISO 9001:2008, ISO 13485 certifications and our products have received CE certification. It allows our medical goods to meet standards approved all over the world: Europe, South and North America, Middle East, Asia and other regions.



## Our Mission:

To protect people through developing and manufacturing medical disposable products.

Each member of our company works passionately to fulfill our mission. We are doing our best to build the close relationship with both clients and distributors to provide the most suitable medical products for people around the world.



# CONTENTS

AIRWAY MANAGEMENT .....	01
UROLOGY .....	08
FEEDING AND DRAINAGE TUBES .....	10
SYRINGES AND NEEDLES .....	12
IV THERAPY AND VASCULAR ACCESS .....	14
WOUND CARE .....	17
NON-WOVENS .....	24
GLOVES .....	28
SANITARY ABSORBENT .....	30
MISCELLANEOUS .....	32





Airway Management

# Airway Management



**PVC Anesthesia Mask**



**PVC Scented Anesthesia Mask**



**Silicone Anesthesia Mask**



**Tracheostomy Tube**



**PVC laryngeal Mask Airway**



**Silicone Laryngeal Mask Airway**



**Disposable Laryngoscope**



**Endotracheal Tube Standard ( Cuffed )**



**Endotracheal Tube Standard ( Uncuffed )**



**Endotracheal Tube Reinforced ( Cuffed )**



**Endotracheal Tube Reinforced ( Uncuffed )**



**Endotracheal Tube Oral Preformed ( Cuffed )**



# Airway Management



**Endotracheal Tube Oral  
Preformed ( Uncuffed )**



**Endotracheal Tube Nasal  
Preformed (Cuffed )**



**Endotracheal Tube Nasal  
Preformed (Uncuffed )**



**Intubating Stylet**



**Breathing Circuit Corrugated  
(adult/pediatric)**



**Breathing Circuit Expandable  
(adult/pediatric)**



**Breathing Circuit Smoothbore  
(adult/pediatric)**



**Anesthesia Breathing Circuit  
Corrugated (adult/pediatric)**



**Anesthesia Breathing Circuit  
Expandable (adult/pediatric)**



**Anesthesia Breathing Circuit  
Smoothbore (adult/pediatric)**



**Coaxial Circuit**



**Duo-limb Circuit**

# Airway Management



Anesthesia Breathing Circuit  
(adult corrugated)



Breathing Circuit  
(adult corrugated)



Anesthesia Breathing Circuit  
(adult corrugated)



Anesthesia Breathing Circuit  
(pediatric corrugated)



Anesthesia Breathing Circuit  
(adult expandable)



Anesthesia Breathing Circuit  
(pediatric expandable)



Anesthesia Breathing Circuit  
(pediatric corrugated)



Monitoring Line



Bacteria and Virus Filter  
(25ml)



Bacteria and Virus Filter  
(25ml)



Bacteria and Virus Filter  
(35ml)



HME Filter (infant 8ml)

# Airway Management



**HME Filter (adult 20ml)**



**HME Filter (adult 20ml)**



**HME Filter (pediatric 12ml)**



**Catheter Mount**



**Elbow (double swivel)**



**Elbow (common)**



**Elbow (with luer lock port & cap)**



**Elbow (with luer lock port & cap)**



**Straight Connector (15M-22F)**



**Straight Connector (22M-22M)**



**Straight Connector (15M-22M/15F)**



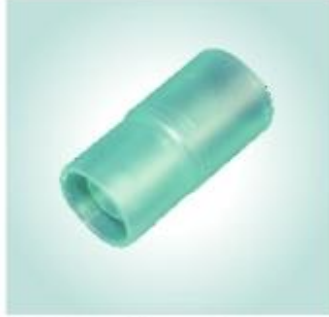
**Straight Connector (15M-15M)**



# Airway Management



**Straight Connector (22M-22F)**



**22F Smoothbore Connector**



**Straight Connector  
(22M-22M/15F)**



**Straight Connector  
(15M-22F)**



**Straight Connector  
(15M-15F)**



**Straight Connector  
(15M-15M)**



**Silicone Rebreating Bag**



**Latex Reservoir Bag**



**Latex Free Reservoir Bag**



**Manual Resuscitators (PVC)**



**Manual Resuscitators (silicone)**



**Oxygen Mask**



**Nebulizer Mask**



**Nebulizer Kit with T Mouth Piece**



**Adjustable Venturi Mask**



**Non-rebreathing Oxygen Mask**



**Tracheostomy Mask**



**Oxygen Connection Tube**



**Nasal Oxygen Cannula**



**Berman Airway**



**Guedel Airway**



**Nasopharyngeal Airway**



**Mucus Extractor**



**CPR Pocket Mask**



## Secured Medical Direction UK CO., LTD

Specializes in Disposable Medical Products  
That caters to various specializations

